

## **CanLiFe 48 Volt Lithium Golf Cart Battery Installation Instructions – Yamaha, Club Cart Precedent, Club Car DS & EXGO TXT**

Please note that your new batteries have been shipped in a partially Charged State As Per Transportation Requirements. Once installed charge them for 6-8 hours before use.

Installation Is Very Straightforward. To Begin Remove The Old Lead Acid Batteries And Interconnecting Cables. Be Sure To Mark The Main 48V Positive And 48V Negative Cart Cables. The Existing Charge Port Can Be Disconnected And/Or Removed:



If Corrosion Or Dirt Is Present, Now Is A Good Time Clean Out The Battery Compartment

On Older Carts With Steel Or Aluminum Frames A Grinder With Wire Wheel Is The Fastest Way To Remove Corrosion And Rust

Your New CanLiFe 48 Volt Batteries Will Fit In Place Of The Original 8 Volt Lead Acid Batteries, Simply Place The Batteries Next To Each Other In 2 Of The Spots. In Some Carts Like The Club Car Precedent You Can Often Re-Use Two Of The Original Battery Tie Downs To Secure The CanLiFe 48 Volt Batteries.

**If That's Not Possible Use The Included J-Hooks And Aluminum Cross Bars To Secure The Battery. Note You May Need To Secure the pre-drilled aluminum angle provided next to the battery using the screws provided. It may be necessary to drill a hole To Allow For The J-Hook Installation:**

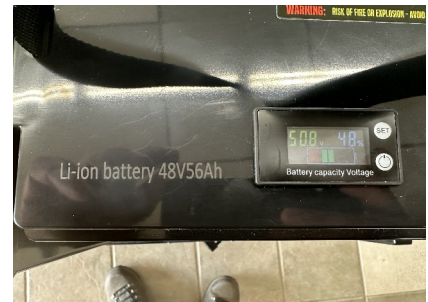


**Connect The Two CanLiFe 48 Volt Batteries Together In Parallel Using The Included Color Coded Cables. The Red Cable Connects The Positives Together, The Black Cable Connects The Negatives Together. Do Not Connect Them In Series Positive To Negative – That Will Damage Your Controller, Motor And Other Accessories.**

**Now Securely Mount The Included Onboard Smart Lithium Charger In A Secure Location In The Battery Compartment. Connect The Red Wire To One Of The Battery's Positive And The Black Wire To The Other Battery's Negative. You Can Often Mount The Included Pass Through Port In The Opening Left When You Remove The Old Charge Port. Otherwiths Drill A 1.5" Hole With A Hole Saw To Secure. Plug The Charger In And The Installation Is Complete.**



**An LCD Display Has Also Been Included For At A Glance State Of Charge**



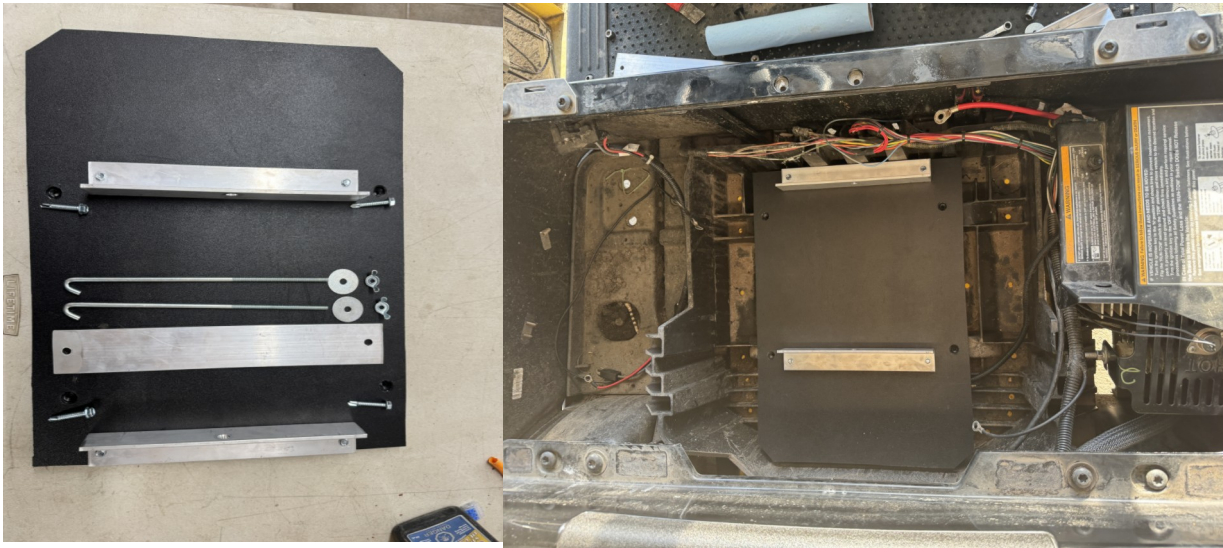
**Feel Free To Contact Jason @ 204-291-7198 Or Email [info@westrock.ca](mailto:info@westrock.ca) If You Have Any Questions**

**2008 And Newer EZGO RXV Battery Installation Instructions (4 x 12 Volt Configuration)**

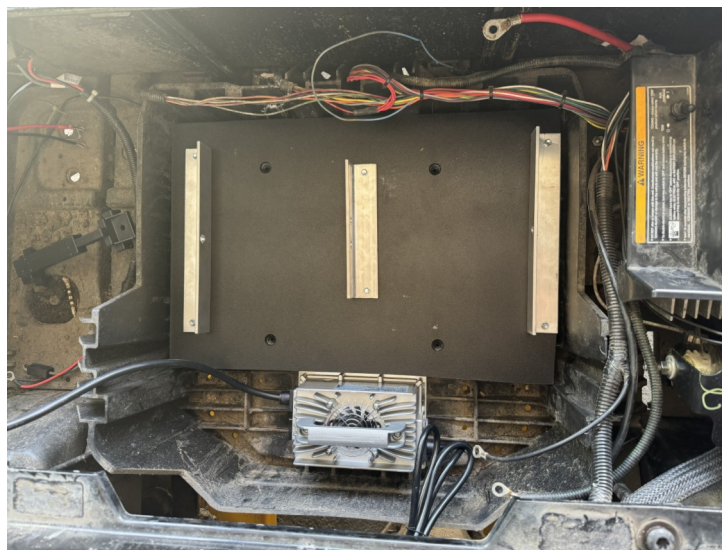
The EZGO RXV has a unique plastic battery tray that makes it difficult to secure a single or dual lithium batteries when upgrading the cart.

We have solved this by including a custom poly mounting plate that anchors to the existing tray:

**Single CanLiFe Ultra High Capacity 48V150 Ah Battery Mounting Plate For EZGO RXV**



**Single Or Dual CanLiFe 48V30/48V56 Battery Mounting Plate For EZGO RXV**



Feel Free To Contact Jason @ 204-291-7198 Or Email [info@westrock.ca](mailto:info@westrock.ca) If You Have Any Questions

After Removing old batteries, clean out tray if necessary and then place the supplied mounting plate in place as pictured above. Using the 4 self tapping screws provided, secure the plate to the battery tray below through the four pre-drilled holes. The bolts should be flush with the top of the plate once complete.

CanLiFe Ultra High Capacity 48 Volt 150 Amp Hour secured With J Hooks & Cross Bar



CanLiFe Single 48V30/48V56



CanLiFe Dual 48V30/48V56

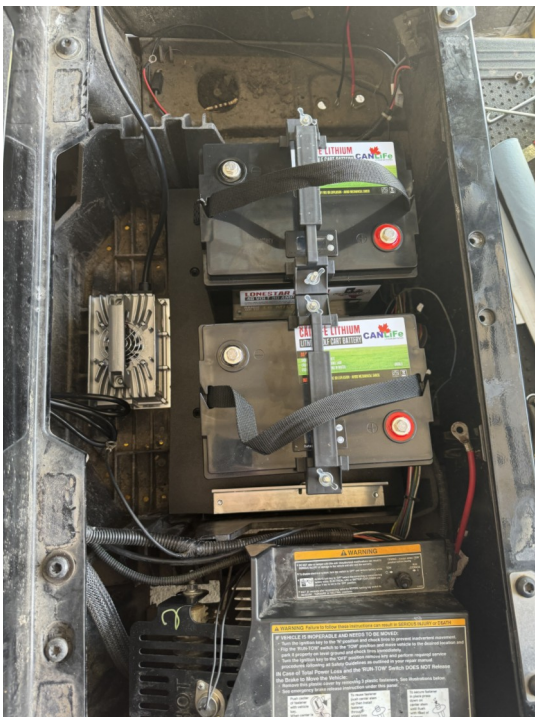


**Now Securely Mount The Included Onboard Smart Lithium Charger Next To The Battery/Batteries. Connect The Red Wire To One Of The Battery's Positive And The Black Wire To The Other Battery's Negative.**

**Important: Note that on the RXV the Blue Wire From The Charge Port Must Be Removed And Connected To the 48 Volt Battery Positive (Use A Ring Terminal). This Disables The Reed Switich Allowing The Cart To Operate. Make Sure You Unplug The Extension Cord Before Driving The Cart Away.**



**Secure the Charger to the battery tray with self tapping screws provided**



**You Can Often Mount The Included Pass Through Port In The Opening Left When You Removed The Old Charge Port. Otherwise Drill A 1.5" Hole With A Hole Saw To Secure With self tapping screws. Plug The Charger AC cord to the inlet And The Installation Is Complete.**



Feel Free To Contact Jason @ 204-291-7198 Or Email [info@westrock.ca](mailto:info@westrock.ca) If You Have Any Questions